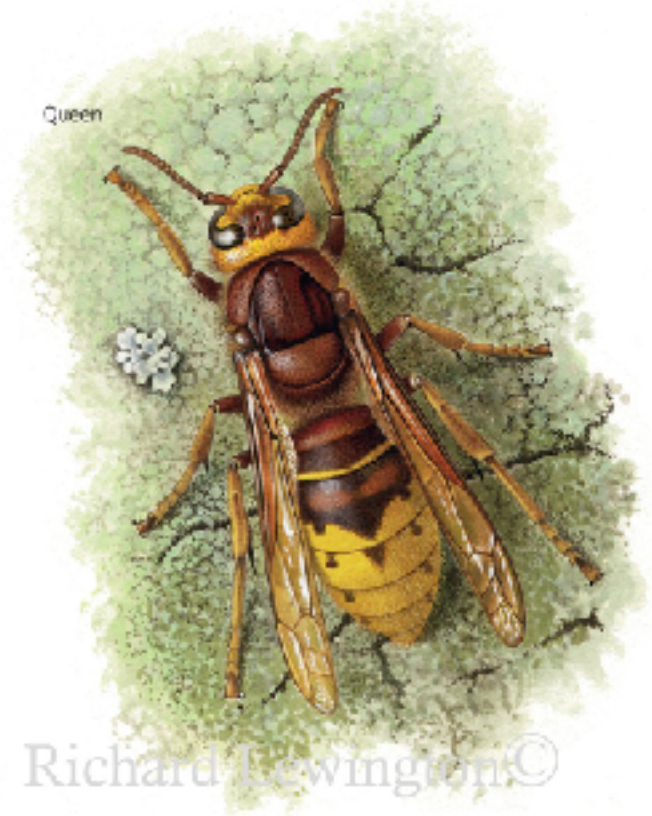


Queen



Asian Yellow-legged Hornet
Vespa velutina

Queen



European Hornet
Vespa crabro

Richard Lewington ©

Queen



Common Wasp
Vespula vulgaris



Nest of
Median Wasp

Queen



Median Wasp
Dulichovespula media

Worker



The Asian Yellow-legged Hornet is smaller and darker than the European Hornet, and the largely black abdomen, thorax, and top of head help to identify the Asian species. The Asian Hornet is considerably larger and darker than the Common Wasp and similar species, but could potentially be confused with the Median Wasp; the thorax of the wasp, however, has characteristic yellow 'tick' marks, while in the hornet it is plain black. The nest of the Median Wasp is superficially similar to that of the Asian Hornet, but is much smaller and is typically constructed lower down in bushes, rather than high in the canopy. Richard Lewington